



Hyperion, a Mitcorp innovation, can further enhance the articulation probe with:

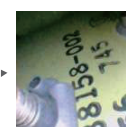
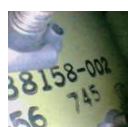
- Clearer images on monitor (640 x 480 resolution)
- Brighter images in low-light conditions
- Anti-reflection and particle-free view on metal or mirror surface
- 90° view rotations during inspection



**BRIGHTER IMAGE**  
Light enhancement under low-light condition.



Four 90° view rotation to identify codes.



**ANTI-REFLECTION**  
Reduce reflection on metal or mirror surface.



**PARTICLE-FREE**  
To eliminate the dust on the mirror without wipe.



6.0 mm  
Wireless probe (1m,2m)



6.0 mm  
Wired probe (1m,2m)



5.5 mm  
Front view probe  
(1m,2m,3m)

## Hyperion Probe Specifications

PROBE	DIAMETER OF PROBE	TYPE OF PROBE	LENGTH OF PROBE
<b>hyperion</b> HYPERION PROBE	5.5mm	SM(wired)	1m,2m,3m
<b>hyperion</b> Two way ARTICULATION PROBE	6.0mm	SM(wireless)	1m,2m
		SM(wired)	1m,2m

SM: Soft-metal | SR: Semi-rigid | F: Front View | S: Side View

