

The HEINE Optotechnik range of loupes is ideal for a wide range of industrial applications. The range includes keyhole loupes, loupes for surface inspection and spectacle - or head-worn loupes:

Keyhole Loupes

The HEINE keyhole loupe is developed from medical technology and, with its unique specification, provides a view in openings from 0.3mm and in cavities such as locks and jets. It also serves as an illuminated loupe for various working distances.

Illuminated Loupes:

The range includes instruments from 5 – 10x magnification for incident light microscopy of surfaces and photo-documentation.

Binocular Loupes:

HEINE Binocular Loupes set new standards. Innovative design, together with High-Tech materials and production process all contribute to the exceptional quality of the image produced. HEINE Binocular Loupes reveal the tiniest details and avoid eye strain at the same time. Their ergonomic design combined with the choice of working distance and viewing angle makes them easy to use even over long periods. As a general rule: The lower the magnification, the larger the field of view.





HEINE Keyhole loupes

For apertures from Ø 0.3mm. Working distance from 5-250 mm

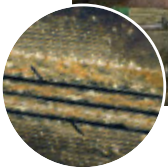


- ∴ **Concentrated XHL light** for small cavities, cracks, bores from **0.3mm diameter**
- ∴ **Up to 10x magnification:** Can also be used as an illuminated loupe for surface examination.
- ∴ **17 lenses on the lenswheel:** For examination of objects at a distance from **5 to 250mm.**
- ∴ **With illuminated distance-meter.**
- ∴ **Correction for examiner's refractive error.**

Keyhole loupe	3.5V
Keyhole loupe with 3.5V bulb, without handle	T-002.24.105
Extension cord automatic plug	T-000.99.230
XHL Xenon Halogen spare bulb 3.5V	T-002.88.070



Inspection-Set A	2.5V
Consisting of: mini Keyhole loupe with mini 2000 Battery handle (with batteries), XHL Xenon Halogen spare bulb 2.5V in transparent pack	
	T-510.10.052
XHL Xenon Halogen Spare Bulb 2.5V	T-001.88.042



Power and light sources	
∴ mini 2000 Battery handle for 2 IEC LR6 batteries	2.5V
∴ BETA Battery handle with 3 LR14 dry batteries	3.5V
∴ Rechargeable handles NiMH or Li-ion	



mini Illuminated Loupes, 5x and 8x



A truly "mini" instrument, weighing only 170g, which is handy for the pocket. The head is made of metal, the handle of high-impact thermoplastic.

mini Illuminated Loupe, 5x and 8x	2.5V
mini Illuminated Loupe with 5x lens complete with mini 2000 Battery handle	T-001.82.102
same, but with 8x lens	T-001.82.202
mini Loupe Head with bulb 2.5V, without handle	T-001.82.011
Aplanatic lens 5x	T-000.14.510
Achromatic lens 8x	T-000.14.511
XHL Xenon Halogen spare bulb 2.5V	T-001.88.034

Inspection Set B/1

Consisting of:

mini Illuminated Loupe with 5x lens , XHL Xenon Halogen spare bulb with mini 2000 Battery handle (2.5V) in transparent pack	T-511.10.052
--	---------------------

Inspection Set B/2

(similar to B/1), except with **8x lens** with

mini 2000 Battery handle (2.5V) in transparent pack	T-511.19.052
---	---------------------

mini Illuminated Loupe Head, 10x



mini Illuminated Loupe Head, 10x	2.5V
mini Illuminated Loupe Head, 10x, focusable, with adaptor for measuring scale, mini 2000 Battery handle XHL Xenon Halogen bulb 2.5V	T-001.82.302
mini Illuminated Loupe Head, 10x, focusable, with adaptor for measuring scale, XHL Xenon Halogen bulb 2.5V	T-001.82.300
Universal measuring scale	T-000.14.509
XHL Xenon Halogen spare bulb 2.5V	T-001.88.034

Inspection Set B/3

Consisting of:

focusing mini Illuminated Loupe Head, 10x , 1 XHL Xenon Halogen spare bulb with mini 2000 Battery handle (2.5V) in transparent pack (without measuring scale)	T-511.11.052
--	---------------------



HEINE DELTA 20® LED Illuminated Loupe 10x



- ∴ **LED illumination close to daylight.** 6 LEDs or, alternatively, illumination reduction with push down button to 3 LEDs for improved contrast. Virtually unlimited working life.

Specifications:

∴ Illumination:	LED (6 Diodes)
∴ Magnification:	10x
∴ Image size:	Ø 23mm
∴ Special features:	3D view can be selected. Camera adaptors for digital SLR cameras. Adjustable Eyepiece. Individual focusing, range of correction - 6 to + 6 dpt.



DELTA 20 LED Illuminated Loupe 10x

3.5V LED

with contact plate 23mm dia. with scale

T-008.34.207

Accessories



Accessories

Contact plate, 23mm dia. without scale	T-000.34.203
Contact plate, 23mm dia. with scale	T-000.34.206
Extension cord automatic plug	T-000.99.230
BETA Beltclip for BETA handle	T-000.99.008
SLR Photo Adaptor Canon	T-000.34.185
SLR Photo Adaptor Nikon	T-000.34.186
SLR Photo Adaptor Olympus	T-000.34.187



Power and light sources

∴ BETA Battery handle with 3 LR14 dry batteries	3.5V
∴ Rechargeable handles NiMH or Li-ion	

HEINE C 2.3® Binocular Loupes



C 2.3

- ∴ **Crisp, clear images.** Multi-coated, scratch-resistant silica glass lenses produce crisp, clear images.
- ∴ **Flexibility for precise adjustment.** Independently adjustable PD controls ensure precise alignment of the optics.
- ∴ **Low profile design.** Compact, low profile optics allow the user to easily look over the loupes for non-magnified view.
- ∴ **Super lightweight and comfortable – only 46 g.** Flexible coil temples wrap-around to fit the users anatomy securely and comfortably. Spring-loaded temples will adjust to the user's anatomy. Light weight metal frame.
- ∴ **The ideal all-purpose loupe.** The feather-light weight, low-profile design and low cost of the C 2.3 loupe make it the ideal all-purpose loupe.
- ∴ **Working distance.** 340 mm or 450 mm (13 or 18 inches).

Specifications:

∴ Lens system	Aplanatic	
	C 2.3/340	C 2.3/450
∴ Magnification	2.3x	2.3x
∴ Working distance	340mm	450mm
∴ Filed of view Ø	110mm	130mm
∴ Depth of field	120mm	190mm
∴ Weight	46g	46g

C 2.3 /340 mm

User's refractive error/
Effective working distance

+2	440 mm
+1	390 mm
0	340 mm
-1	300 mm
-2	270 mm

C 2.3 /450 mm

User's refractive error/
Effective working distance

+2	670 mm
+1	560 mm
0	450 mm
-1	420 mm
-2	370 mm

C 2.3 Binocular Loupe

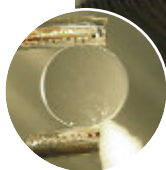
C 2.3/340 Loupe in case	T-000.32.039
C 2.3/450 Loupe in case	T-000.32.202

Accessories

C 2.3 Binocular Loupe

Detachable protective lenses
To protect the optics of the C 2.3 loupes.

T-000.32.097





HEINE HR® Binocular Loupes

HR Technology for an even bigger field of view

▶ NEW DESIGN !



- ✦ **The Brightest Image.** Our exclusive coating technology reduces light reflection to 0.3%, providing the brightest image of any comparable loupe.
- ✦ **The Crispest Image with Colour Correction.** State-of-the-art HEINE optics with achromatic lenses provide a new standard for image clarity, crispness and colour.
- ✦ **Dust- and Water-Resistant.** All HR loupes are dust- and water-resistant to IP65/IEC 60529 (2000) to ensure ease of cleaning.
- ✦ **Flexibility for Precise Adjustment.** HEINE Binocular loupes have independently-adjustable optics left and right to select the exact inter-pupillary distance (PD).

Specifications:

✦ Lens system	Achromatic
✦ Magnification	2.5x
✦ Working distance	340mm
✦ Field of view Ø	>90mm
✦ Depth of field	to 110mm
✦ Weight	42g

Optics only

T-000.32.504

HEINE HRP® Binocular Loupes

HRP Technology for highly-magnified crisp images

▶ NEW DESIGN !



HRP Binocular loupes of 4x or 6x magnification are used when high magnification is necessary. Please note that the field of view and depth of field will decrease as magnification increases, making higher magnification loupes more difficult to get accustomed to.

- ✦ **Prismatic Optics.** Only top-quality, precision glass prisms are used to provide the highest resolution and clearest, crispest images over the entire field of view “edge-to-edge”.
- ✦ **The Brightest Image in Perfect Colour.** Our exclusive coating technology reduces light reflection to 0.3% allowing for optimum light transmission.
- ✦ **Dust- and Water-Resistant.** All HRP loupes are dust- and water-resistant to IP65/IEC 60529 (2000) to ensure ease of cleaning.
- ✦ **Flexibility for Precise Adjustment.** HRP loupes have independently adjustable optics for selecting the exact inter-pupillary distance (PD).

Specifications:

✦ Lens system	Prismatic	
✦ Magnification	4x	6x
✦ Working distance	340mm	340mm
✦ Field of view Ø	>50mm	>40mm
✦ Depth of field	40mm	30mm
✦ Weight	78g	89g

4x

6x

Optics only

T-000.32.705

T-000.32.706

Accessories for HEINE HR® and HRP® Binocular Loupes

▶ **NEW DESIGN !****Lightweight Headband**

T-000.32.516

**Detachable Protective Lenses**to protect the optics of the **HR** Binocular Loupes (5 pair).

T-000.32.537

**Detachable Protective Lenses**to protect the optics of the **HRP** Binocular Loupes.

T-000.32.027

**Case for HR and HRP Binocular Loupes**

T-000.32.530