

# Multiplexer unit

# S\_View D200S

## DESCRIPTION

- Multiplexer with 8 inputs (for Sylvac probes P2 to P50)
- Dynamic measurement (200 mes/s)
- Ideal for the layout conception of multi-gauging
- Command for pneumatic lifting unit
- Software allowing the treatment of up to 24 channels simultaneously (bargraph)
- Sending of the measured values into Excel, notepad or in specific files
- Creation of sequences for sending data
- Mathematic combinations between channels
- Standalone use possible



8 inputs for Sylvac probes

Software allowing the treatment of up to 24 channels simultaneously (bargraph)

Tolerance indicators

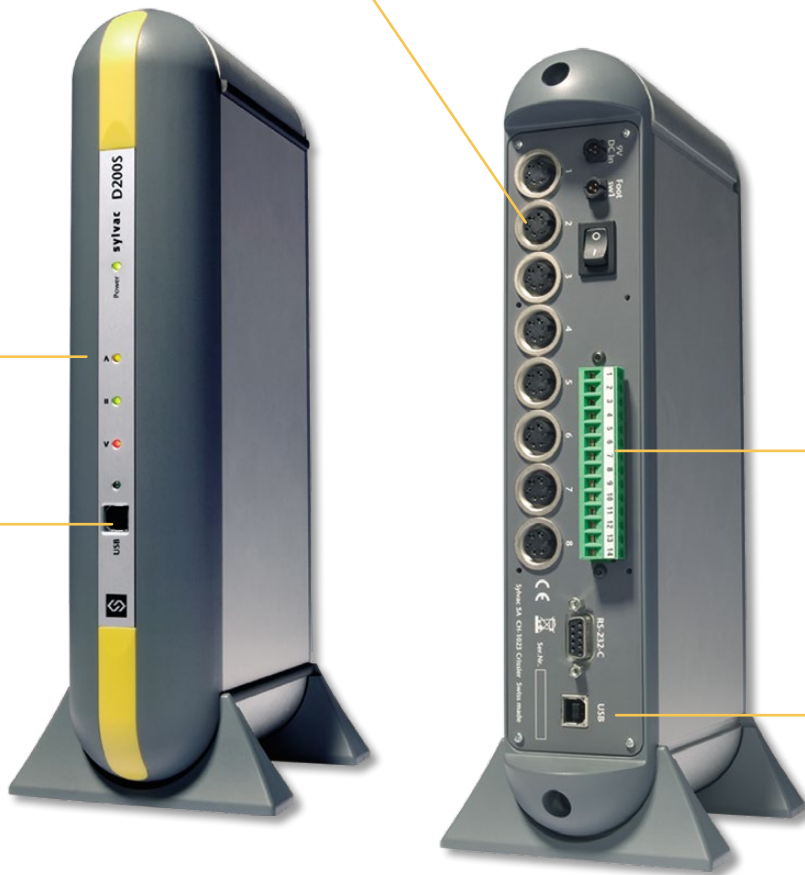
Connection by USB (2x) or RS232 (1x)

Opto-coupled digital output rack

Connection by USB (2x) or RS232 (1x)



USB



# Multiplexer unit

# S\_View D200S

## DISPLAY/SOFTWARE

Selection of unit mm/inch

Selection of resolution

PRESET function

Sending Data

Tolerance indicators with LED

Min/Max/Delta display

Individual selection of measuring direction

Switchable digital/bargraph display

Global tolerance status of the measured part

Programming channels screen

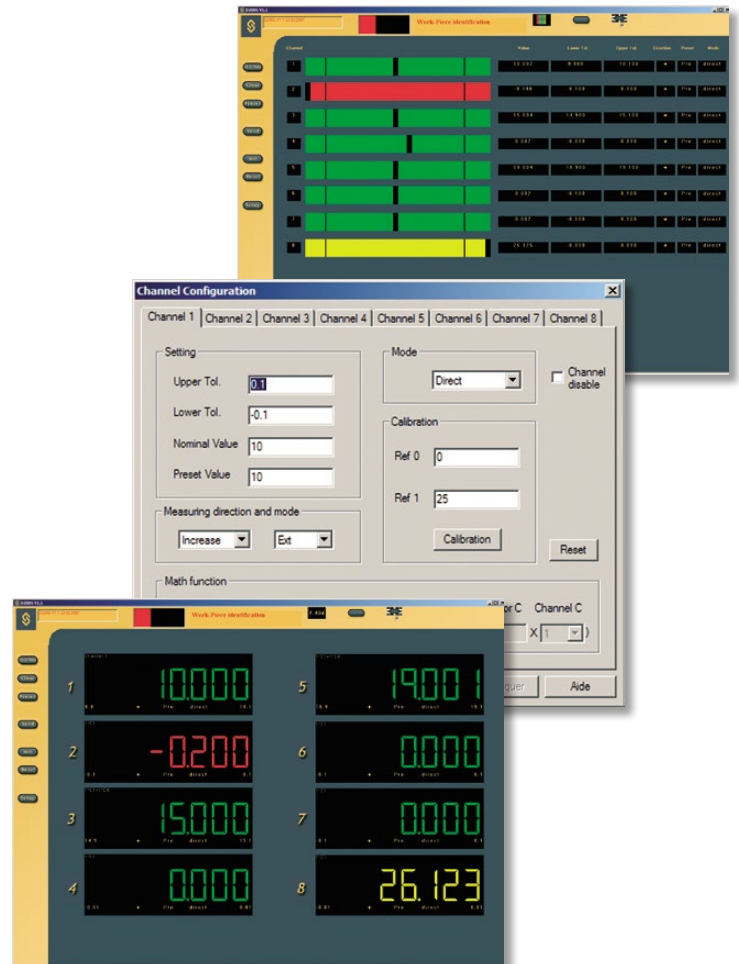
Sending Sequences of Data

External contact configuration

Electrical external contact configuration

Open / Save configurations

Transfer configuration to D200S unit



## TECHNICAL SPECIFICATIONS

		804.1200
Type		D200S
Max. Error	μm	P2 : 1.5 / P5 : 1.6 / P10 : 1.6 / P25 : 1.9 / P50 : 3.9
Repeatability	μm	P2 : 0.2 / P5 : 0.2 / P10 : 0.2 / P25 : 0.2 / P50 : 0.4
Frequency of measurement		200 values /second
Sizes	mm	304 x 171 x 61
Weight	kg	1.2
Case		Aluminium profile, Terlend plastic, ABS and aluminium vanished
Protection rating according to IEC 60529		IP50
S_Connect		USB / RS232 <sup>1)</sup>
Programmable by PC		●

<sup>1)</sup> see cables chapter

# Multiplexer unit

# S\_View D200S

## BASIC INSTRUMENT

- Instrument according to technical specifications
- Feet for use in vertical position
- Charging unit according to country (904.4000)
- PC Connection cable type USB (804.1210)
- CD with D200S software
- Instruction manual

## APPLICATIONS



Dynamic measurement of several diameters, (OD and ID) of a shaft

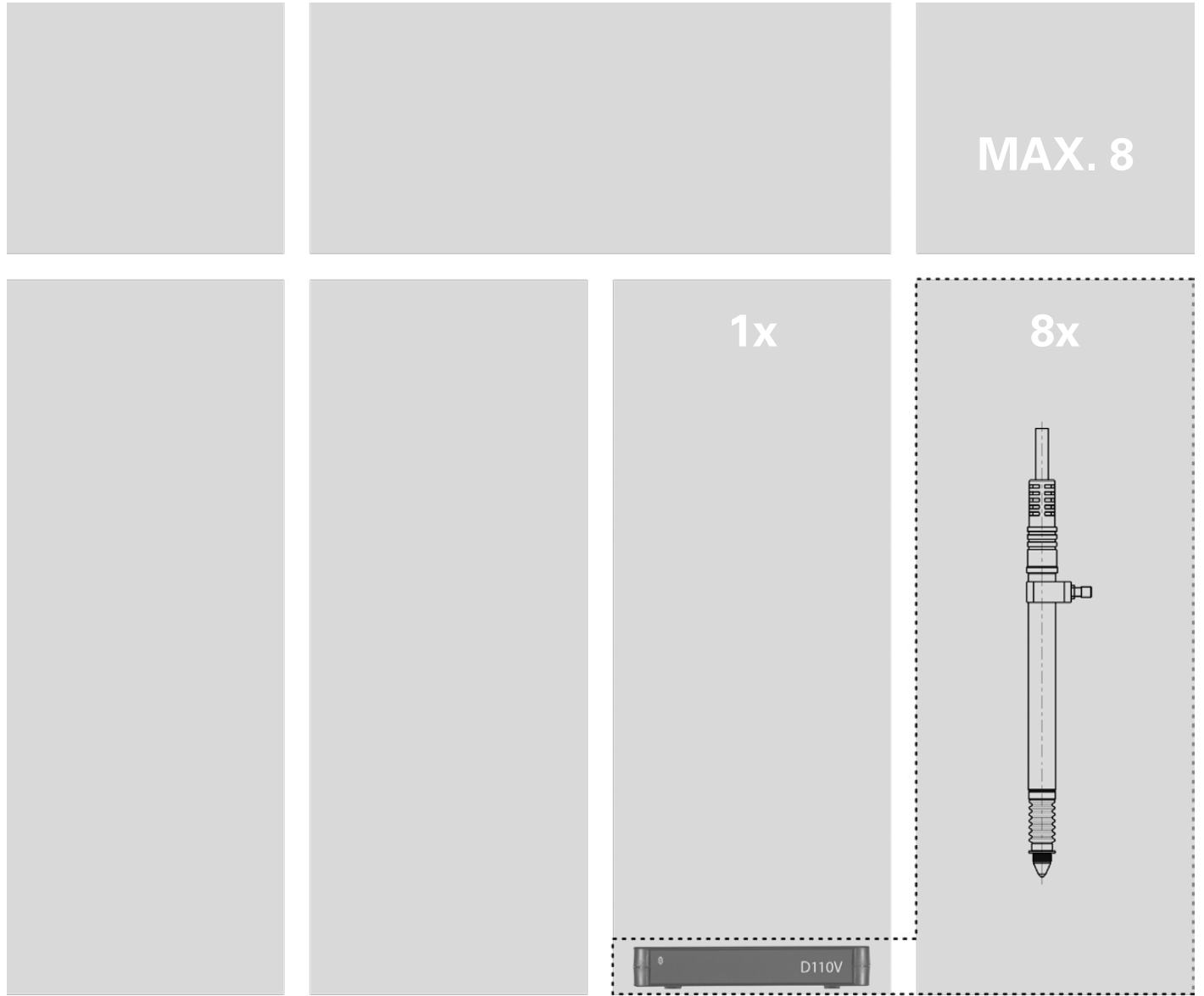


Multi-gauging application

# Multiplexer unit

# S\_View D200S

## POSSIBILITIES OF D110V PNEUMATIC LIFTER



# Multiplexer unit

# S\_View D200S

## POSSIBILITIES OF CONNECTION

